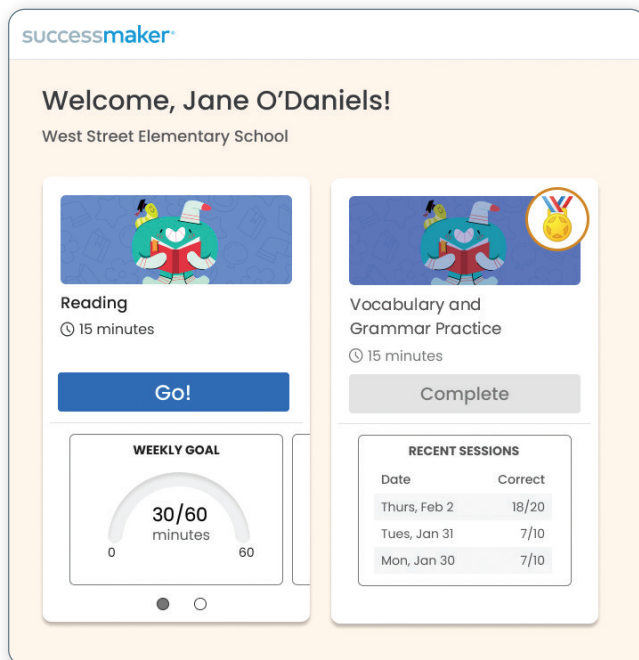


## successmaker® READING

### What's New for Back-to-School 2023

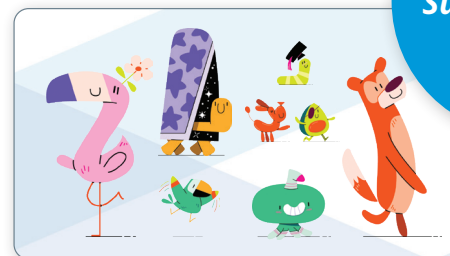
Savvas Learning Company is pleased to share the following updates coming to *SuccessMaker® Reading* for Back-to-School 2023.



#### New Student Dashboard

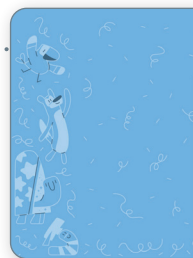
Empower your students to monitor their own learning! The new *SuccessMaker Reading* student dashboard makes it easier than ever for students to track their own progress. Students can easily see how they are progressing toward their weekly usage goal, plus see their recent session performance.

Meet the  
*SuccessMaker*  
Family!



#### New Characters & Enhanced Student Experience

Meet the new *SuccessMaker Reading* characters! In addition to the new characters, your students will see an updated interface with colorful, age-appropriate visuals, regardless of the grade level of the skill they are learning.



Grades K-2



Grades 3-5



Grades 6-8

## Updated Initial Placement

SuccessMaker Reading's Initial Placement has been updated to provide a consistent experience across grades K-8 and offer educators deeper insights into students' unique literacy profiles.

All students will now begin Initial Placement with Word Reading, where they hear audio of a grade-level word and select the correct word. Word Reading scores then route each student into the appropriate level of listening (Levels K-2.5) or reading comprehension (Levels 2.5+) passages. This two-part Initial Placement experience gives educators insight into students' strengths and instructional needs in both word reading and comprehension, and offers a more precise and efficient placement experience.



## New Phonics and Vocabulary Content

New phonics and vocabulary content helps students to build skills in both word reading and word meaning.

## Additional Multilingual Learner Support

The program now provides translations in over 60 languages. Several languages, including Spanish, offer audio support. Students can easily translate directions, or words, phrases, sentences, and paragraphs.

**Contact your Savvas Supplemental, Acceleration, and Assessment Account Executive to learn more.**